



Welspun<sup>®</sup>  
FLOORING

**TIMELESS**





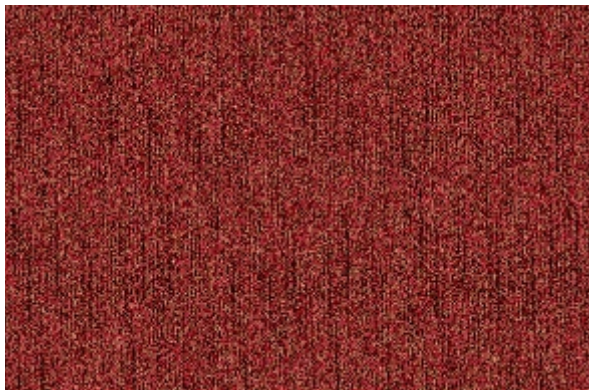
# TIMELESS

Color is a vital element of design & life. It can be that last little thing that pulls a room together. It can convey emotion, create or elevate mood. It can even bring order & organization.

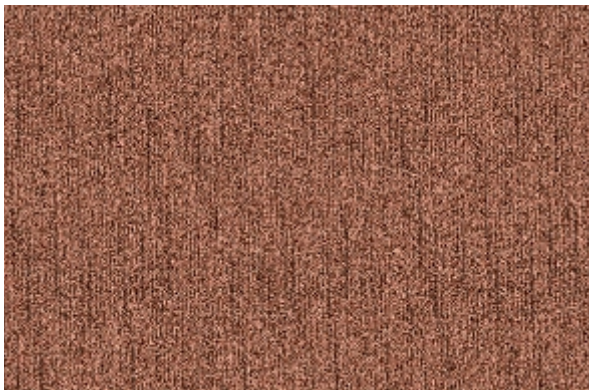
This collection was designed to add a fresh pop of color to any carpet tile layout. The selection of hues was chosen to partner with each other or any of our other beautiful carpet tile collections.



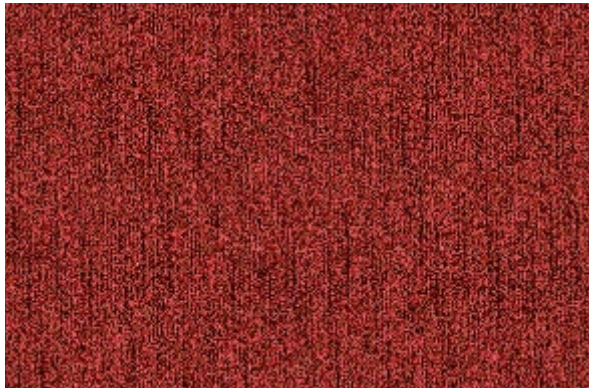




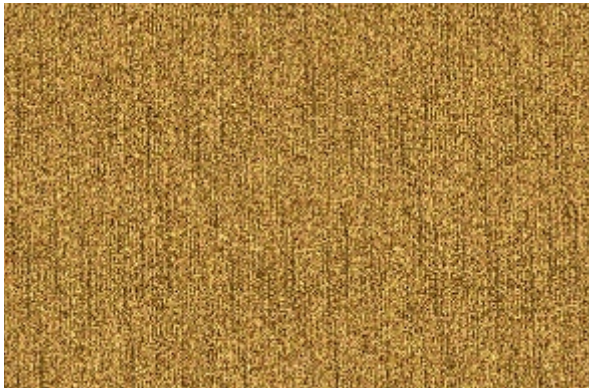
AUBURN



PEONY



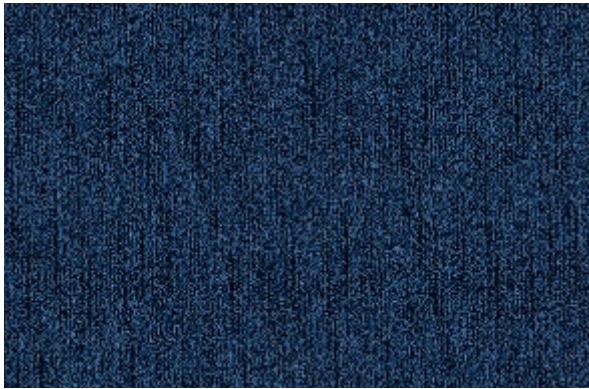
VINTAGE CRIMSON



ELECTRIC YELLOW



LIME



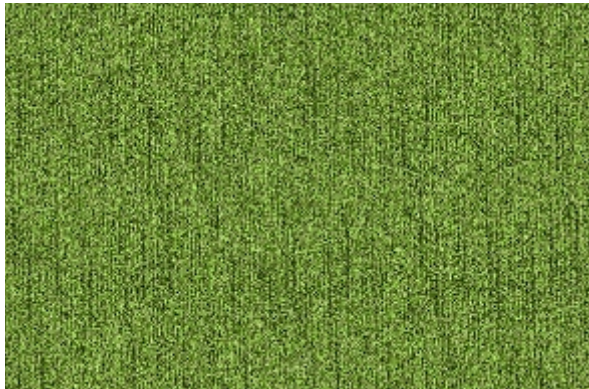
TROPICAL BLUE



CARIMINE



DAFFODILE



CHARTREUSE



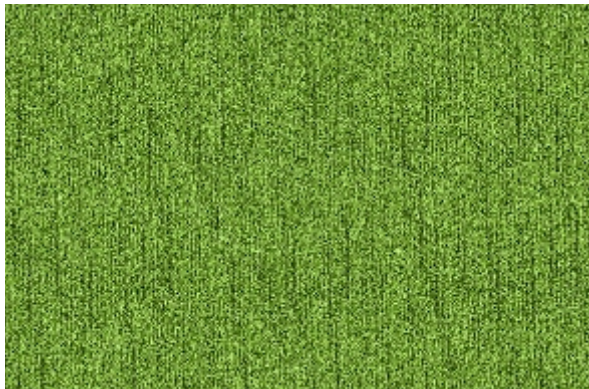
AZURE



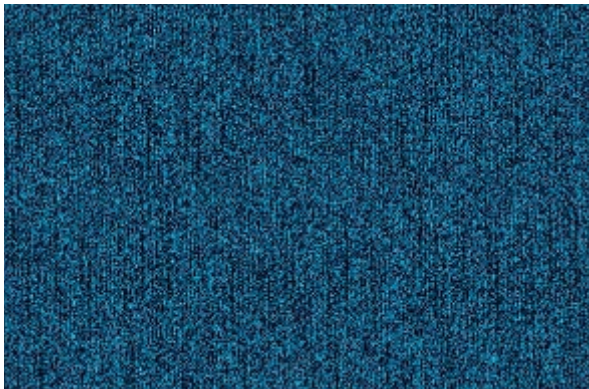
PERSIMMON



BUTTER CUP

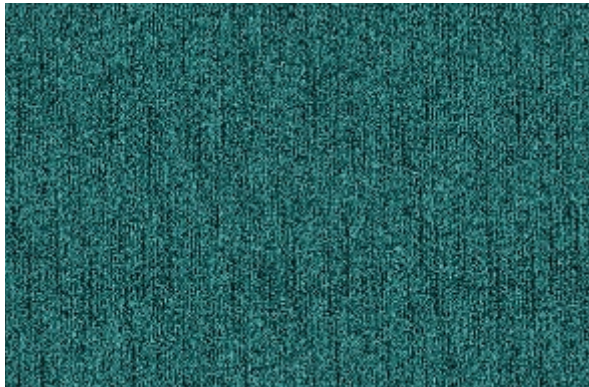


GRASS

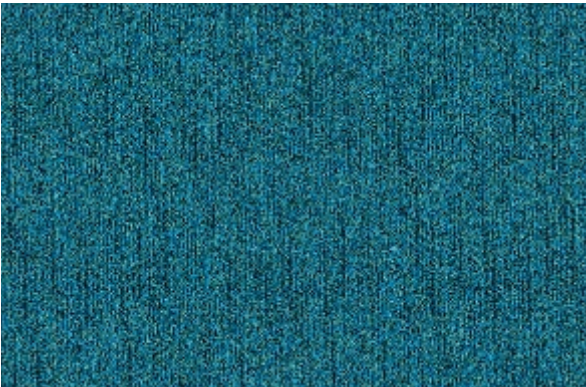


ICEFALL

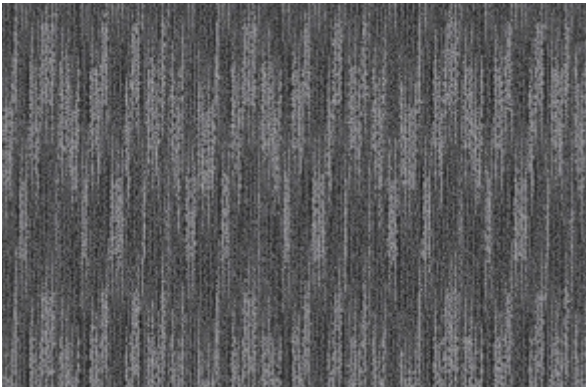




TIFFANY



SEAFALL



GREY HERON



FAWN



RAVEN



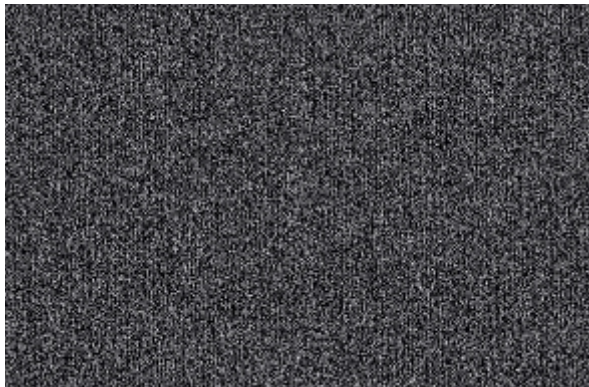
MUSHROOM



GREY JAY



WHEATEN



ASH GREY



SKY GREY



BERYL









ASH GREY | MUSHROOM | SKY GREY | AZURE | TROPICAL BLUE | ICEFALL

\* For illustrative purposes only.





FAWN | VINTAGE CRIMSON | ELECTRIC YELLOW | SEAFALL | CHARTREUSE

\* For illustrative purposes only.

























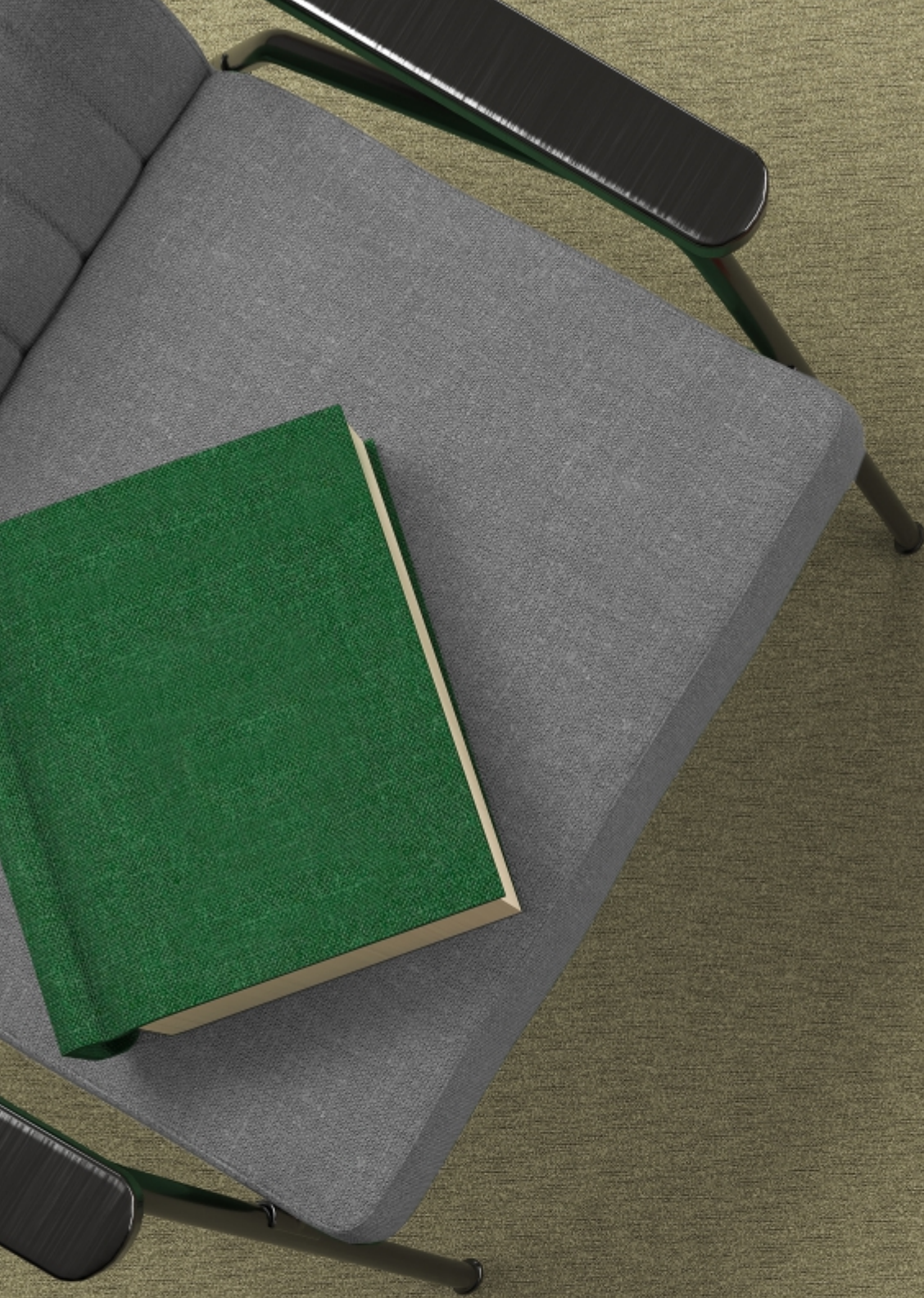




AUBURN | CARIMINE | SKY GREY

\* For illustrative purposes only













AZURE | SKY GREY

\* For illustrative purposes only.







FROM AN IDEA TO A REVOLUTION AND BEYOND ||

Welspun is one of India's fastest-growing global conglomerates. With 'Har Ghar Welspun' at the heart of our culture, we are amongst global leaders in markets like U.S.A, Saudi Arabia, Europe and also in India.

Welspun Flooring is Welspun Group's newest brainchild. With a state-of-the-art manufacturing facility spread over 300 acres, we are disrupting the world of flooring. Crafted passionately by our dedicated team of experts, Welspun Flooring is a breakthrough in terms of engineering and design. With form meeting function in each style, you'll see flooring in a new light!

Product and Process Innovation is at the heart of everything we do here. We are proud that this drive to innovate has led to the creation of various trademarks, technologies and designs beyond category codes.

Our vertically integrated state-of-the-art manufacturing plant spread over 300 acres in Hyderabad, India is Asia's largest production facility and an epitome of advanced flooring technology.

With uncompromised notion, and with Welspun Flooring transcending boundaries, the same has carved a niche in the industry.

Welspun Flooring is winning the World, One room at a time.

ALL FOR A BETTER TOMORROW! ||

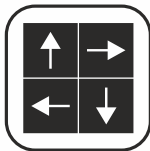
A responsibility to the environment and a commitment to sustainable social progress have long been enshrined in Welspun's way of working. Be it the communities we influence, the families we're a part of or the entrepreneurs we partner with.



FEATURES



Nylon Tufted Product



Multiple Design Possibilities



Easy To Install



Reduces Wastage During Installation



Easy To Maintain



Stain Resistance



Fade Resistance



Abrasion Resistance



Texture Resistance



Ideal For Heavy Foot Traffic



PRODUCT SPECIFICATIONS IN CARPET TILES

|                    |                                  |
|--------------------|----------------------------------|
| • Quality          | Tufted Carpet Tile               |
| • Yarn             | 100% Solution Dyed Nylon (NY6+™) |
| • Machine Gauge    | 1/12" Loop Infinity              |
| • Pile Type        | Multi Level Loop                 |
| • Pile Height*     | 3 mm (+/- 5%)                    |
| • Tuft Weight *    | 610 GSM / 18 Oz                  |
| • Tuft Density*    | 5400                             |
| • Total Thickness* | 5 mm (+/- 5%)                    |
| • Backing System   | Extruded PVC (Welspun Ecolite™)  |
| • Size             | 50X50 cm                         |

\*Indicates +/-5%

CERTIFICATIONS







**EVERY HOME TO  
EVERY HEART  
WELSPUN**

**— #HarDilWelspun —**

**Welspun**<sup>W</sup>  
**FLOORING**

**Address:**

Welspun Global Brands Ltd,  
Survey No 190, Chandanvelly,  
Near Hythabad, Shabad  
Mandal, Ranga Reddy District,  
Telangana 501503, India

**Contact us :**

To transform your flooring, just in touch with us by sending an email at:

Global: [global\\_saleswfl@welspun.com](mailto:global_saleswfl@welspun.com)

Website: [global.welspunflooring.com](http://global.welspunflooring.com)

**Contact Us**

