

BANDHANI LOOKBOOK 2022





UTSAV - Knots that untie a world of possibility!

The Utsav Collection draws its inspiration from the breath of regional Indian crafts abundant across the country. This first of its kind India inspired portfolio will cover the arts of Bandhani from the West, Phulkari from the North, Jamdani from the East and Kolam from the South.

Each collection skips the literal translation. Instead, it chooses a more subtle, deconstructed execution that allows the architect to use liberally across large and small spaces without overwhelming the senses.

We journey to kaleidoscopic Gujarat for our first collection to unravel the many delightful attributes of textile dyeing.

With this collection, titled Bandhani, we introduce designs inspired by Kombi that showcase the spirit of this resist dyeing art-form. As worthy sentinels to the colours and patterns of the region, it give us the ability to play with the style in new and innovative ways.



KOMBI
- CA0766-005

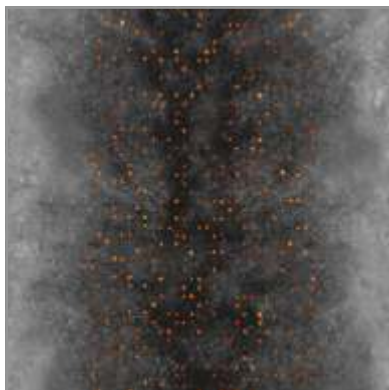


KOMBI

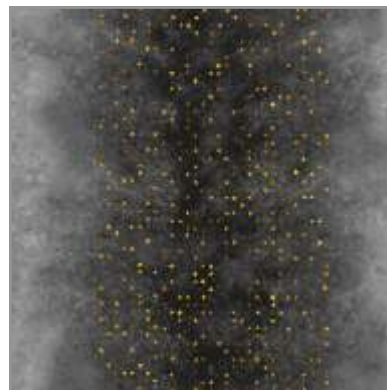
Combining monochromatic neutrals and a choice of vibrant or subtle accents, Kombhi transitions the matchless pattern aesthetic of traditional dot work to the modern appeal of circles against a solid background.



KOMBI SWATCH
COLLECTION



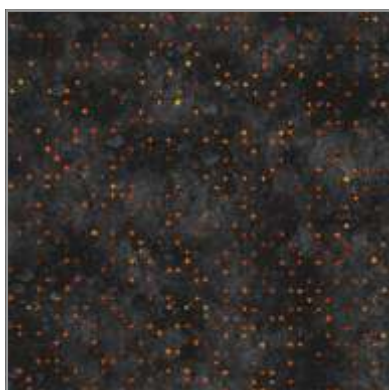
KOMBI | CA0767-002



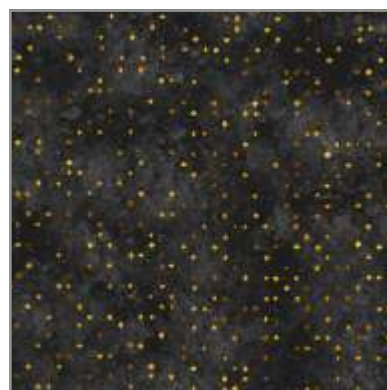
KOMBI | CA0767-003



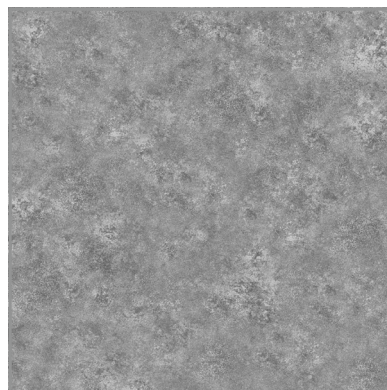
KOMBI | CA0766-005



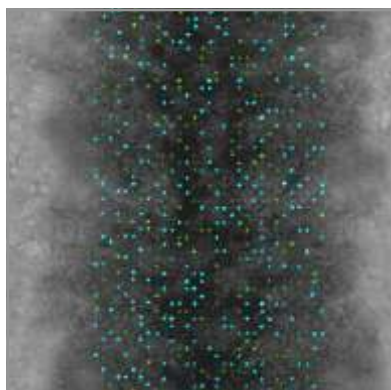
KOMBI | CA0766-002



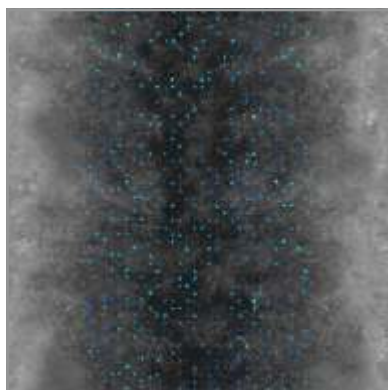
KOMBI | CA0766-003



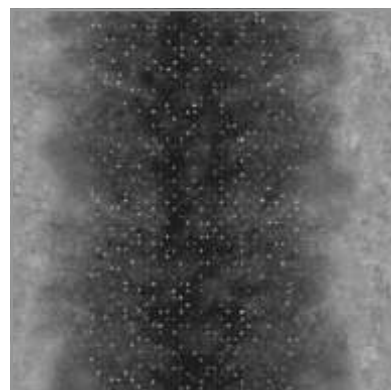
KOMBI | CA0635-006



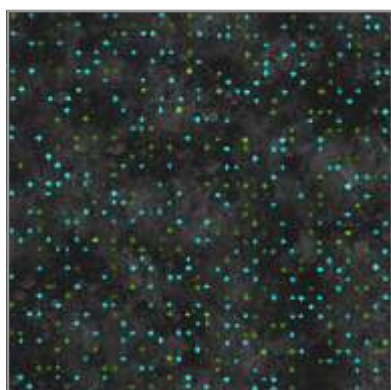
KOMBI | CA0767-004



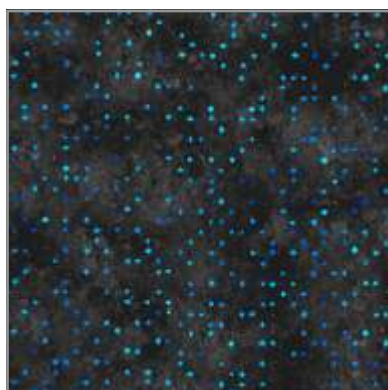
KOMBI | CA0767-001



KOMBI | CA0767-005



KOMBI | CA0766-004



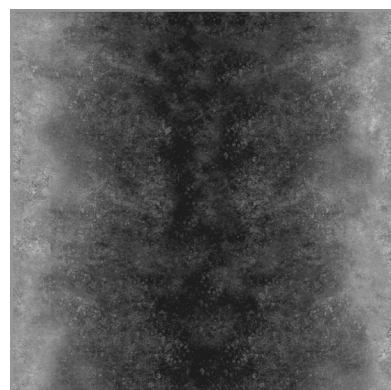
KOMBI | CA0766-001



KOMBI | CA0635-001



KOMBI | CA0635-002



KOMBI | CA0636-001



KOMBI | WARM COLOUR COLLECTION

KOMBI

- CA0635-006
- CA0767-005
- CA0767-002
- CA0766-002
- CA0766-003







KOMBI | COOL COLOUR COLLECTION

KOMBI
- CA0766-004
- CA0767-004
- CA0635-006





KOMBI | NEUTRAL COLOUR COLLECTION

- KOMBI*
- CA0766-003
- CA0766-005
- CA0766-001
- CA0635-002



KOMBI
- CA0635-002
- CA0635-001
- CA0766-003



KOMBI
- CA0767-005
- CA0635-001
- CA0636-001

PRODUCT SPECIFICATION

Yarn	<i>NY6+</i>
Machine/ Gauge	<i>1/10 Loop Pile</i>
Tufting Weight (Ozs)	<i>17</i>
Density	<i>6000 - 6500</i>
Total Height	<i>5 - 6 mm</i>
Pile Height	<i>2.5 - 3 mm</i>
Backing Type	<i>Welspun Ecolite/ PU cushion</i>
SPI	<i>13</i>
Size (Inch)	<i>Tile (24 x 24)</i>

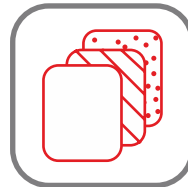
TEST REPORT SUMMARY

TEST NAME	METHOD
Delamination	ASTM D 3936
Tuft Bind	ASTM 1335-67
Dimensional stability	ASTM D 7570
Pile weight	ASTM D 5848-07
Pile density	ASTM D 5848-07
Total thickness	ASTM D 6988-08
Pile height	ASTM D 5823-05a
Gauge	ASTM D 5793-13
Tuft density	ASTM D 5848
Flammability (Pill Test)	ASTM D 2859
Flammability (Radiant Panel)	ASTM E 648-06
NBS Smoke Density (Flaming)	ASTM E 662-06
Lightfastness	AATCC 16 E
Crocking Dry and Wet	AATCC 165-2008
Stain fastness	AATCC 175-2008/ITTS 002
Colour fastness to bleach	AATCC 6
Castor Chair	DIN 54324
Hexapod	ASTM D 5252-15
Dimensional stability (Aachen test)	DIN-STD-54318/ITTS-004
Velcro-Loops	ITTS 112
Shampoo Fastness	AATCC 138
Water Fastness	AATCC 107
Heavy Traffic test (Walk test)	ASTM 6119-03
Thermal Resistance	ASTM C 518

CARPET TILES ADVANTAGES



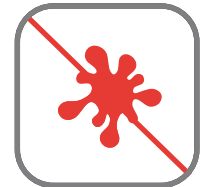
Tufted Printed



Multiple Design Possibilities



Ideal For Heavy Foot Traffic



Stain Protect



40% Lesser Environment Footprint



Fade Resistant



Less Lead Time



Easy To Maintain



Offers Sound Absorption



Easy To Install



Reduce Wastage During Installation



Made in India

CERTIFICATION





WELSPUN GLOBAL BRAND LTD,
SURVEY NO. 190, CHANDANVELLY, NEAR HYTHABAD,
SHABAD MANDAL, RANGA REDDY (DIST),
TELANGANA 501 503
INDIA

Contact us:
1800 - 120 - 1161
India: contact_flooring@welspun.com
Global: global_saleswfl@welspun.com

www.welspunflooring.com



SCAN THE QR CODE TO DOWNLOAD
THE KOMBI LOOKBOOK